



Rely on it.

COLOUR
ROAD | 19
20

Enjoy a spectacle of festive color! Watermelon Supermatt dances, jumps, and delights in glorious vivid style. It is a mouthwatering hue that suggests a color so refreshing it can quench your thirst! More so, it transports you to worlds of frozen summer treats, colorful tropical attire, and luscious fruit.

Watermelon Supermatt is an international color symbol of great times and great environments. With the ability to inject a dash of fun, it is the perfect antidote to muted styles and colors. The lush, pinkish-red hue is practically bursting with juiciness and evokes vibrant health and vitality.

Fashion runways, and stretches of beach can easily be dotted with clothes in this color that exudes haute style and island charm. From gauzy summer dresses, to linen shorts, summer cotton sweaters, and gossamer cashmere, Watermelon Supermatt can make your wardrobe feel that you're on holiday.

Of course, interior and architectural design are ideal for Watermelon Supermatt's attributes, as well. A color for both indoors and out, it is a brilliant accent color for small appliances, home accessories and fashions, and enlivens furnishings, cabinetry, and surfaces. From the kitchen to the living room, to the patio, the color stands perfectly on its own and excels at enhancing other colors and prints.

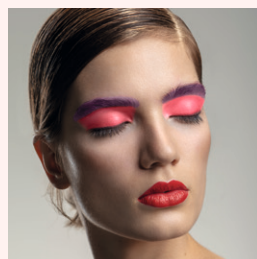
It can create a sharp contrast to white and black, as well as dynamic liveliness with muted greens, dark berry hues, or cocoa brown.

Home, fashion, kitchen or runway, Watermelon Supermatt is full of joy and excitement. It is truly a statement of color happiness.

COLOUR ROAD JOURNEY 19/20 | WATERMELON SUPERMATT



W A T E R M E L O N



VALENTINO



MAY
19
WATERMELON
SUPERMATT