



Rely on it.

Drinking Water Basin
THE SOLUTIONS «WATERPROOFING» RENOLIT

RENOLIT
ALKORGEO

MEMBRANES
RENOLIT
ALKORPLAN



RENOLIT ALKORGEO

Geomembranes RENOLIT Alkorplan



With attestation of conformity for sanitary purpose for direct contact with drinking water.



The geomembranes RENOLIT ALKORPLAN are specially adapted for the waterproofing of drinking water basins:

- Very flexible, they are more resistant against perforation as a rigid membrane and may be installed easily onto any support without equiring any reinforcement.
- Due to their better functional performance they can be installed in lower thicknesses than rigid membranes.
- The geomembrane RENOLIT ALKORLAN are tested positively for the storage of drinking water for the majority of the European countries. They are certified for the alimentary use following the European standard EN 1186/1-15 (migration test in different environment).
- Without any bonding to the concrete, they are placed totally independently to the surface. With an elongation of rupture over 300 %, they keep water tight even when the concrete cracks slightly.
- Their installation is quick, they do not ask for special treatment of the support or waiting time for filling with water (no drying period)
- Perfect for the renovation of old basins as well for new structures.



ABILITY FOR WELDING

Easy to weld, even by hand, they assure in detail the realisation of a perfect waterproofing of complex structures as a water castle.



RENOLIT « WATERPROOFING » is assisted by a group of experts who can help you from the conception of your project till to the realization.

FLEXIBILITY



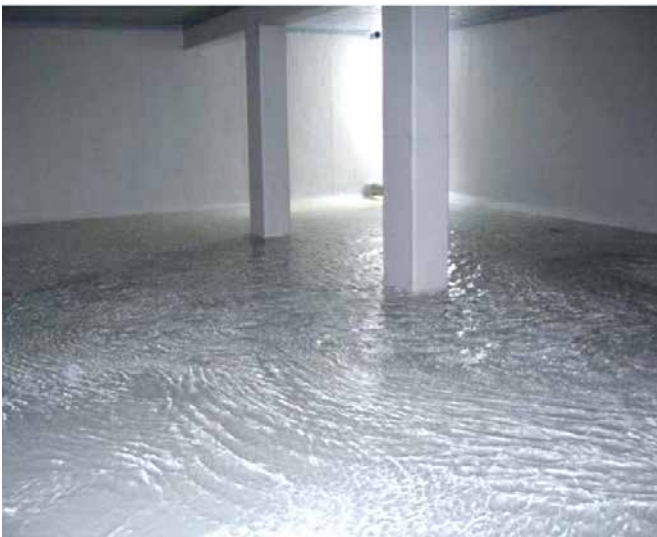
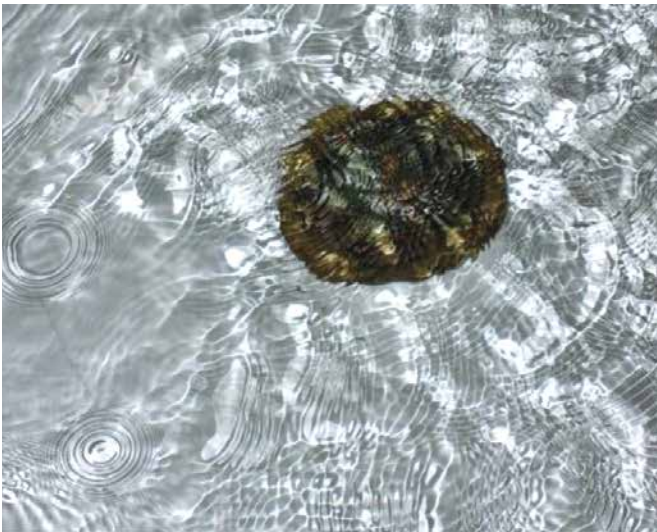
SUPPLENESSE



WATERPROOFING PERFECTION PERFORMANCE



With RENOLIT "WATERPROOFING" you distribute water.. under controlfor a long moment.



INTELLIGENT SOLUTIONS

DRINKING WATER BASIN WITH FLOATING COVER

An economical solution with important capacity.

Target

- Creation of a basin capable to stock water and to protect it during 6 month without giving any taste to the water and avoiding costly treatment in the moment of use.

-To avoid loss of water due to evaporation what presents 1.3 to 1.8m height of water in a Mediterranean country.

Example Corsica: saving important volumes of water during winter to have it available during the touristic season, especially during July and August where the frequency is the highest and the resources of water the lowest.

The solution: storage of water in a water basin equipped with a floating cover.

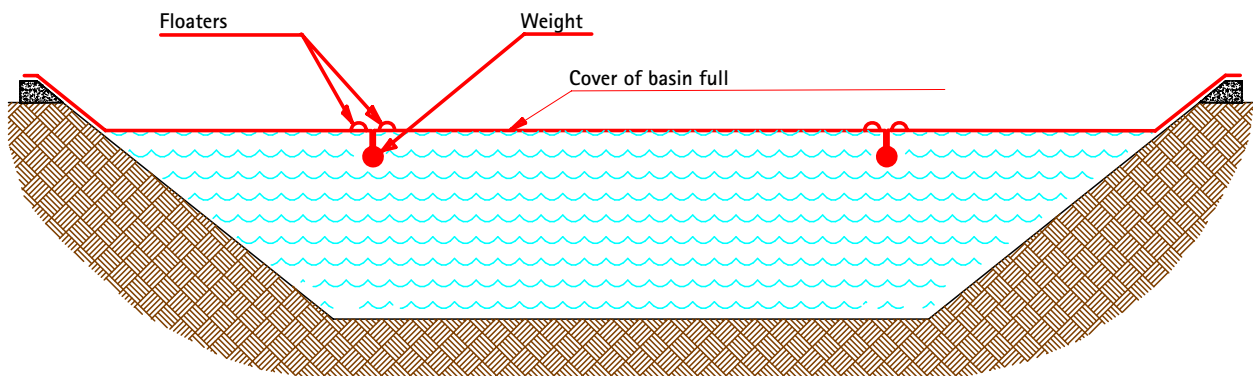
Water will be stored between two geomembranes:

- The first, homogeneous, is installed onto the support of the basin to assure the water tightness

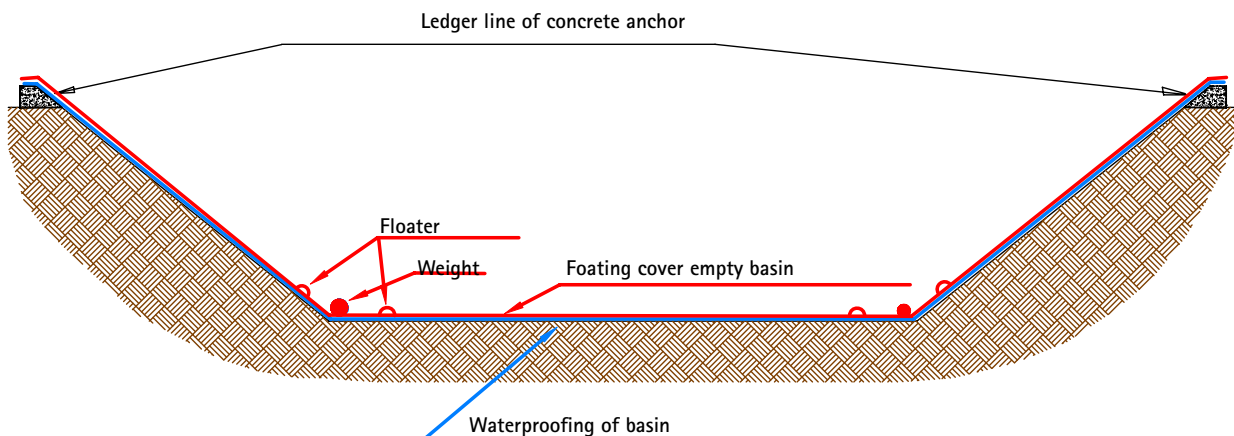
- The second, reinforced with a grid of polyester, is placed over the first with a system of floaters and weights in order to be able to follow without any folds the level of water in the basin.

The floating cover is realised with a reinforced RENOLIT ALKORPLAN.

Geomembrane multi-layer, reinforced, with a lower face, agreed to be in direct contact with drinking water.



Floating cover with high level water



Floating cover fully installed, empty basin

RENOLIT "WATEPROOFING" is assisted by a group of experts who can help you from the conception of your project till to the realisation.







Rely on it.

Renolit Ibérica S.A.
Ctra. del Montnegre, s/n
08470 Sant Celoni | Spain
Phone: +34.93.848.4013
Fax: +34.93.867.5517
renolit.iberica@renolit.com

www.alkorgeo.com

vinyl^{plus}

With **RENOLIT** "Waterproofing", you distribute water... under control – for a long, long moment



RENOLIT ALKORGEO